

Can't beat the Vu.




Trudell Medical International

Distributed by:
Channels Medical Solutions
sales@channels.co.za
086 111 4028

AeroChamber
Plus **Flow-Vu**

Anti-Static Valved Holding Chamber





Sarah can't enjoy the view when she is struggling to breathe.

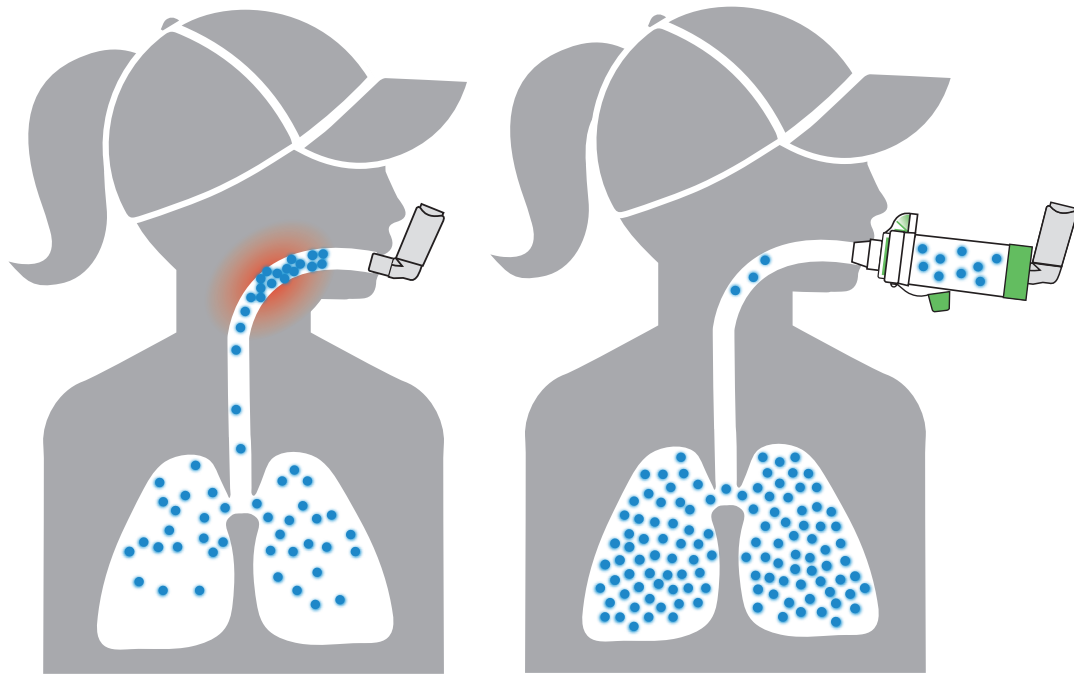
- Globally it is estimated that **334 million people around the world** have asthma¹
- A recent European survey found that **50% of patients with asthma** were not well controlled²
- Approximately **250,000 people die prematurely each year** from asthma and almost all of these deaths are avoidable³

For respiratory patients, getting the most from life means getting the most from their inhaler medication.



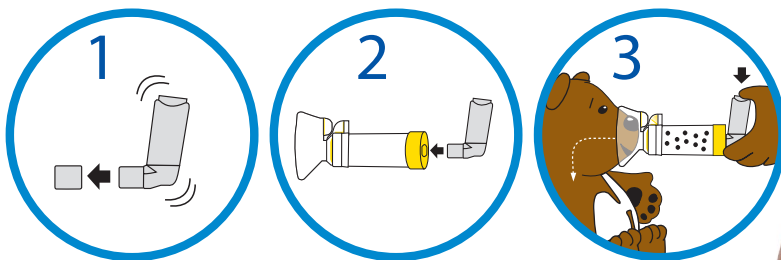
RECOMMENDED IN GUIDELINES

Global respiratory guidelines recommend the use of Valved Holding Chambers, to improve Metered Dose Inhaler (MDI) drug delivery⁴



People use a valved holding chamber with their MDI have better control⁵

- Patients simply need to actuate the inhaler and breathe in the medication
- For use with all MDI's



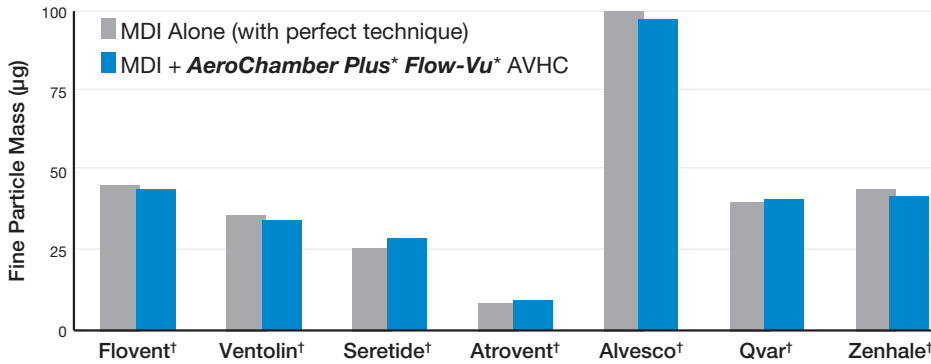
AVHC = Anti-static valved holding chambers

⁴GINA - Global Strategy for Asthma Management and Prevention, 2017. ⁵Levy ML et al Asthma patient's inability to use a pressurized metered-dose inhaler (pMDI) correctly correlates with poor asthma control as defined by the Global Initiative for Asthma (GINA) strategy: a retrospective analysis. Prim Care Respir J. 2013; Dec;22(4):406-11

Improves Adherence versus MDI alone

TARGETED MEDICATION DELIVERY

AeroChamber Plus* Flow-Vu* AVHC delivers the intended dose⁶

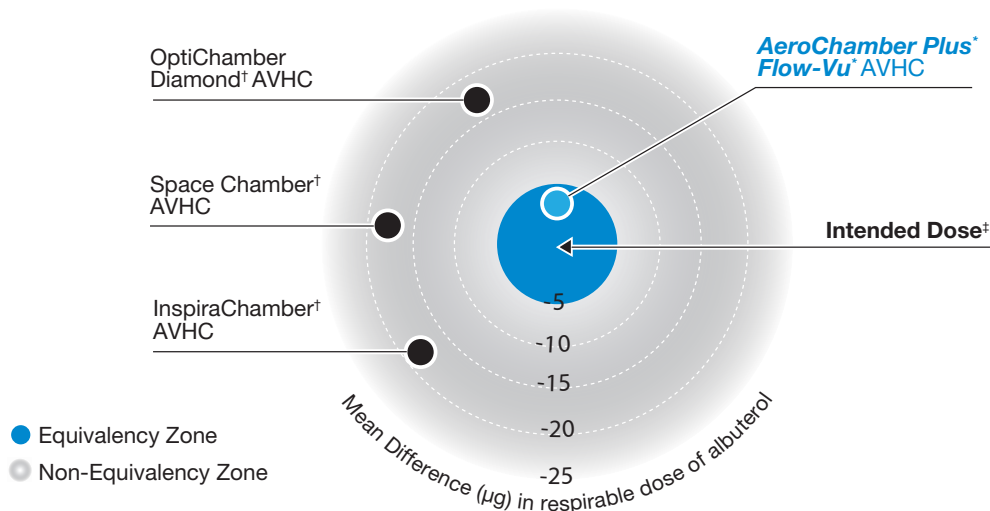


- 9 out of 10 adults don't use their MDI properly⁷
- Use of **AeroChamber Plus* Flow-Vu* AVHC** helps deliver the intended dose
- Prescribing instructions do not need to be modified

Validated Safety and Efficacy

- Safety and efficacy of the **AeroChamber Plus*** brand of chambers has been validated in numerous third party clinical evaluations with different patient populations⁸
- The most recommended brand of chamber by leading MDI pharmaceutical companies

Many chambers claim to be equivalent to **AeroChamber Plus*** brand of chamber but they are not⁹



Different chambers deliver different amounts of medication^{10,11}

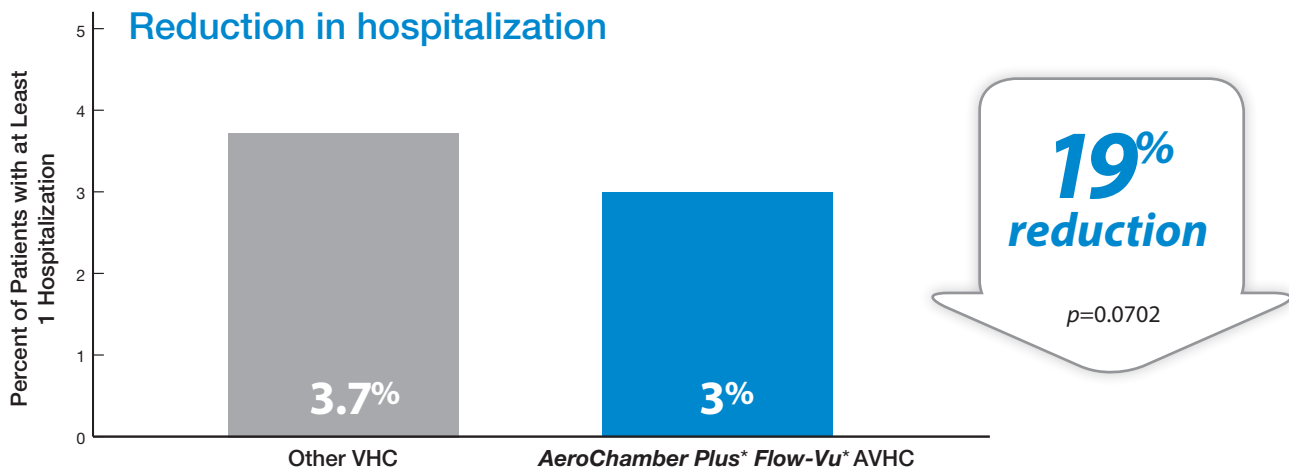
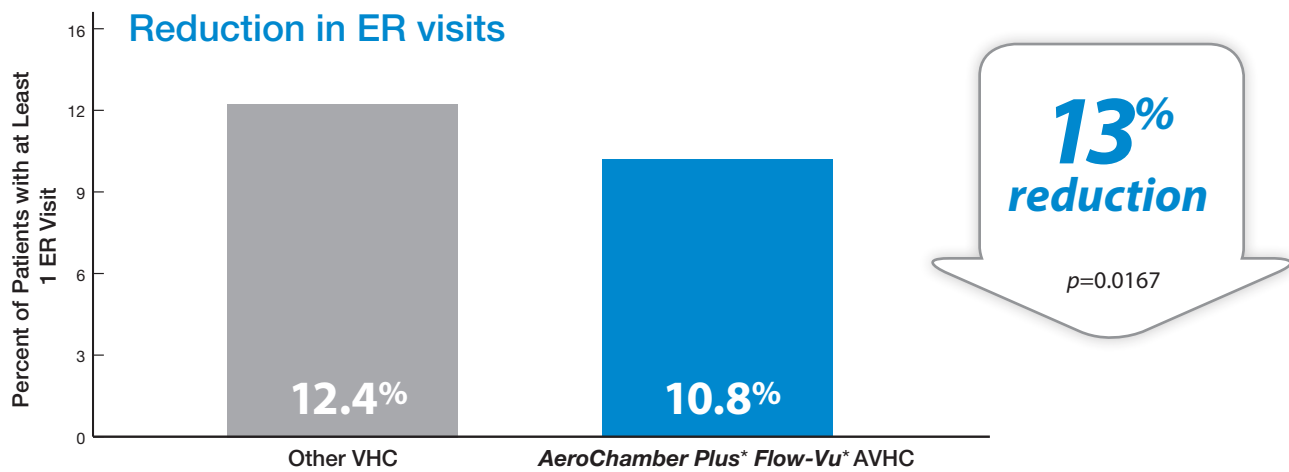
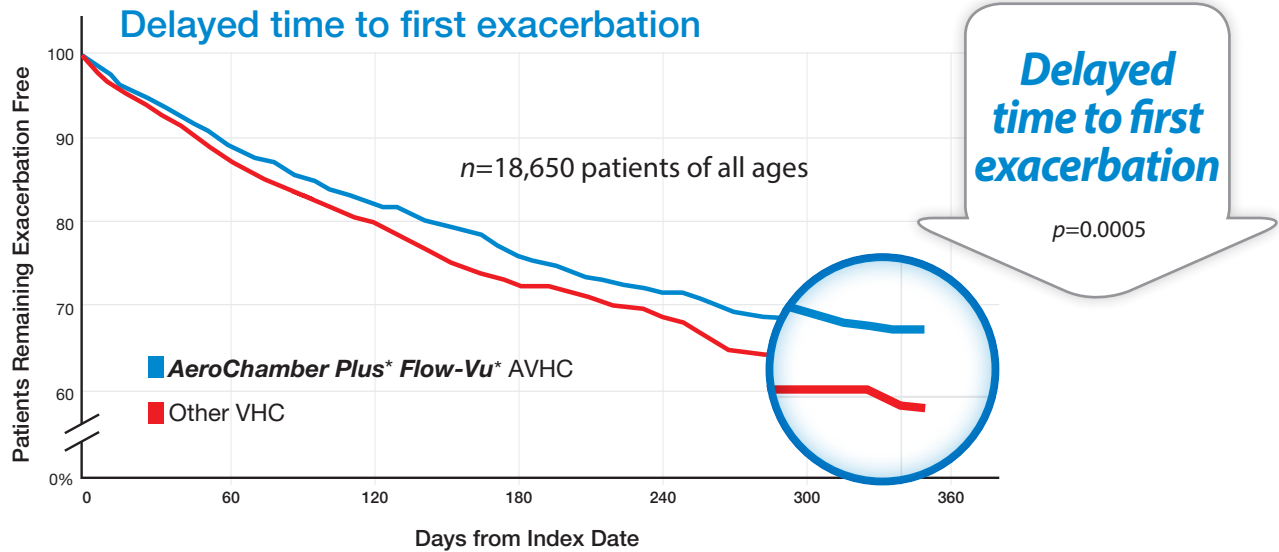
† **AeroChamber Plus*** VHC. Chambers prepared as per IFU.

⁶ Harkness H *et al.* Valved Holding Chambers are non-interchangeable; Development of a Universal VHC that provides assurance of drug delivery to patients and health care providers. Presented at Canadian Respiratory Conference, 2012. ⁷ Plaza V *et al.* Medical personnel and patient skill in the use of metered dose inhalers: a multicentric study. *Respiration* 1998;65:195-8. ⁸ Study Summary: **AeroChamber*** Brand of VHC, May 2016. ⁹ Nagel *et al.* Equivalency evaluation of valved holding chambers with albuterol pressurized metered dose inhaler. *Respiratory Drug Delivery Europe* 2017. ¹⁰ Medicines and Healthcare Products Regulatory Agency (MHRA). Drug safety update – inhaled products that contain corticosteroids, July 2008. ¹¹ Global initiative for asthma (GINA) guidelines, 2017; Global strategy for asthma management and prevention.

Delivers the Intended Dose

IMPROVED CLINICAL OUTCOMES

Real world evidence shows improved clinical outcomes with **AeroChamber Plus* Flow-Vu* AVHC¹²**



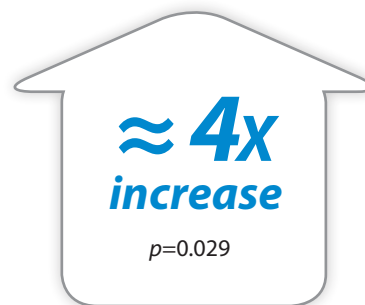
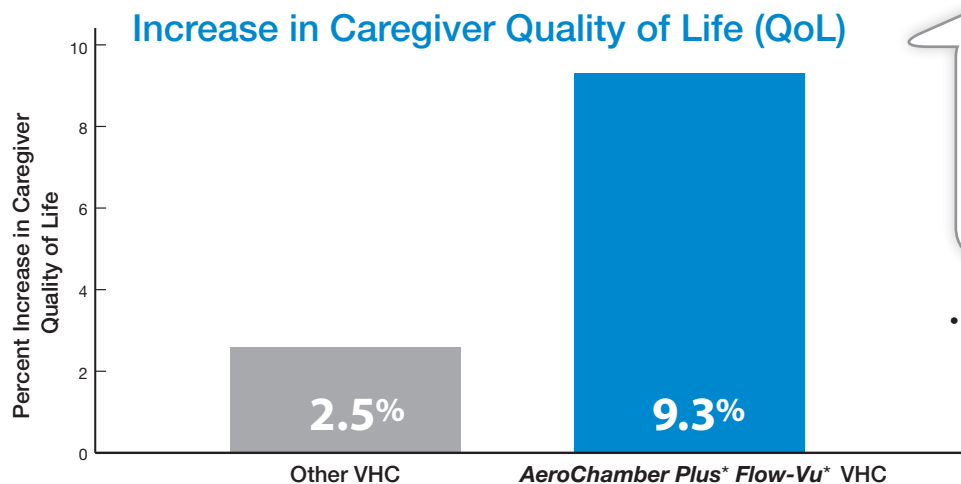
AVHC = Anti-static valved holding chambers

¹² Burudpakdee et al. A retrospective study of the Effectiveness of AeroChamber Plus* Flow-Vu* Antistatic Valved Holding Chamber for Asthma Control. Pulmonary Therapy, 2017.

Improved Asthma Control

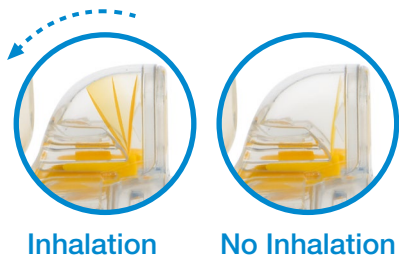
VISUAL ASSURANCE

In Vivo studies show use of a chamber with the **Flow-Vu*** Inhalation Indicator was associated with quality of life improvements and strong device preference^{13,14}



- QoL scores were greater in the **AeroChamber Plus*** **Flow-Vu*** VHC group

The **only** chamber with a dedicated inhalation indicator



The **Flow-Vu*** Inhalation Indicator is a valuable feedback tool that allows caregivers to:

- Ensure a proper facemask seal
- Coordinate actuation of MDI with inhalation
- Count child's breaths

Flow-Vu*

Moves with inhalation to provide **visual assurance** of correct use and medication delivery.



¹³ Ammani W et al. Evaluation of asthma control, parent's quality of life and preference between **AeroChamber Plus*** and **AeroChamber Plus* Flow-Vu*** spacers in young children with asthma. Journal of Asthma, Vol 52;3,2015.
¹⁴ Baig M et al. **Flow-Vu*** Indicator in valved holding chamber for pediatric asthma. American Academy of Pediatrics National Conference 2013.

Improved Quality of Life

Prescribe *AeroChamber Plus* Flow-Vu** AVHC — Specify No Substitutions —

9  **out of 10**
MDI Patients don't use their inhalers correctly.

Guidelines recommend



 Delivers the intended dose

 Safety and efficacy validated

 =  QoL

 Visual assurance

 Improves clinical outcomes

 Other chambers are not equivalent



Trudell Medical International*

Manufactured by: Trudell Medical International
725 Third Street, London, Ontario, Canada, N5V 5G4
+1-866-510-0004 info@trudellmed.com



 Designed and Developed in Canada

AeroChamber
Plus **Flow-Vu**
Anti-Static Valved Holding Chamber