

Can't beat the Vu.



Trudell Medical International™

Distributed by:
Channels Medical Solutions
sales@channels.co.za
086 111 4028

AeroChamber
Plus **Flow-Vu**

Anti-Static Valved Holding Chamber



Doug can't enjoy the view when he is struggling to breathe.

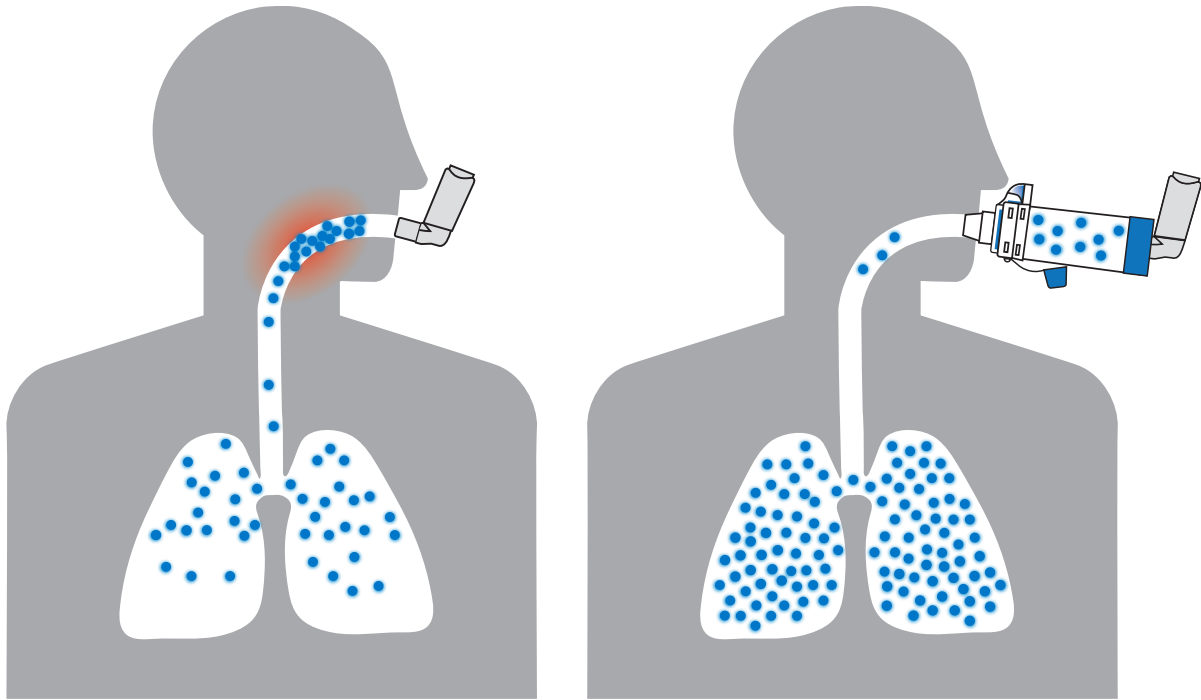
- Many patients are not able to use their inhalers effectively¹
- There are over **250 different inhaler products** for the treatment of asthma and COPD²
- The concurrent use of **multiple inhaler types**, all with varying techniques **can confuse patients**.³
- As the number of different inhaler devices increases, the **frequency of errors increases**⁴
- **18% reduction in exacerbation rate** demonstrated when patients used inhalers with similar techniques⁵

For respiratory patients, getting the most from life means getting the most from their inhaler medication.



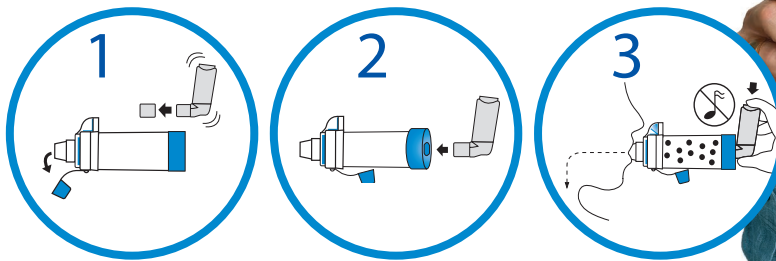
RECOMMENDED IN GUIDELINES

Global respiratory guidelines recommend the use of Valved Holding Chambers, to improve Metered Dose Inhaler (MDI) drug delivery⁶



People who use a valved holding chamber with their MDI have better control⁷

- Patients simply need to actuate the inhaler and breathe in the medication
- For use with all MDIs



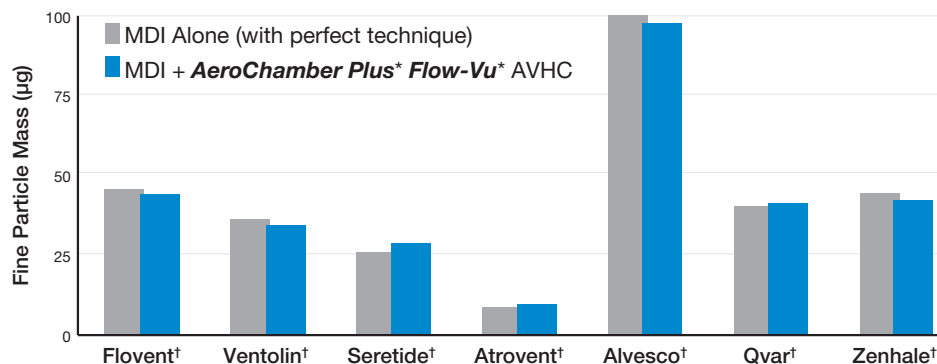
AVHC = Anti-static valved holding chambers

⁶GINA - *Global Strategy for Asthma Management and Prevention*, 2017. ⁷Levy ML et al Asthma patient's inability to use a pressurized metered-dose inhaler (pMDI) correctly correlates with poor asthma control as defined by the Global Initiative for Asthma (GINA) strategy: a retrospective analysis. *Prim Care Respir J.* 2013; Dec;22(4):406-11.

Improves Adherence versus MDI alone

TARGETED MEDICATION DELIVERY

AeroChamber Plus* Flow-Vu* AVHC delivers the intended dose⁸

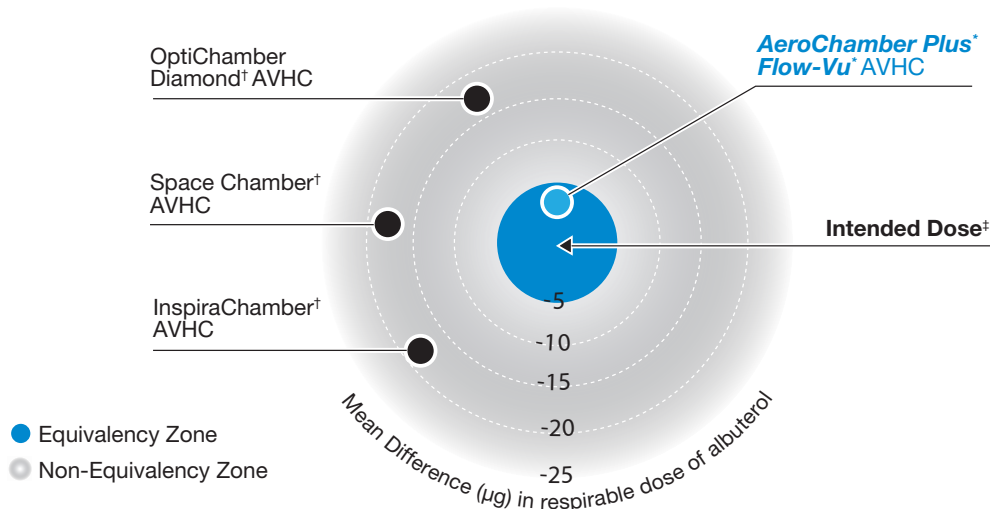


- 9 out of 10 adults don't use their MDI properly⁹
- Use of **AeroChamber Plus* Flow-Vu* AVHC** helps deliver the intended dose
- Prescribing instructions do not need to be modified

Validated Safety and Efficacy

- Safety and efficacy of the **AeroChamber Plus*** brand of chambers has been validated in numerous third party clinical evaluations with different patient populations¹⁰
- The most recommended brand of chamber by leading MDI pharmaceutical companies

Many chambers claim to be equivalent to **AeroChamber Plus*** brand of chamber but they are not¹¹



Different chambers deliver different amounts of medication^{12,13}

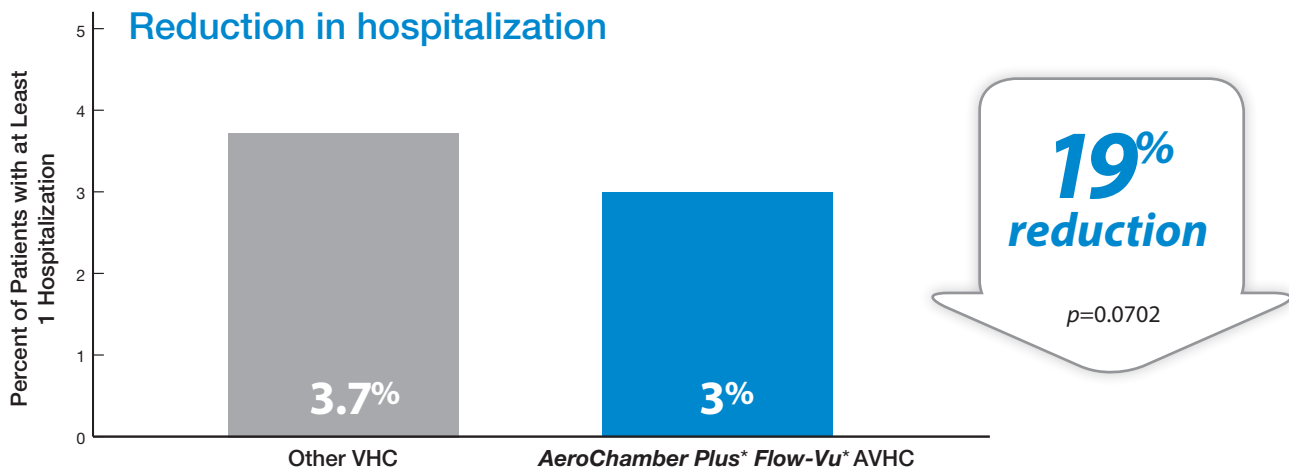
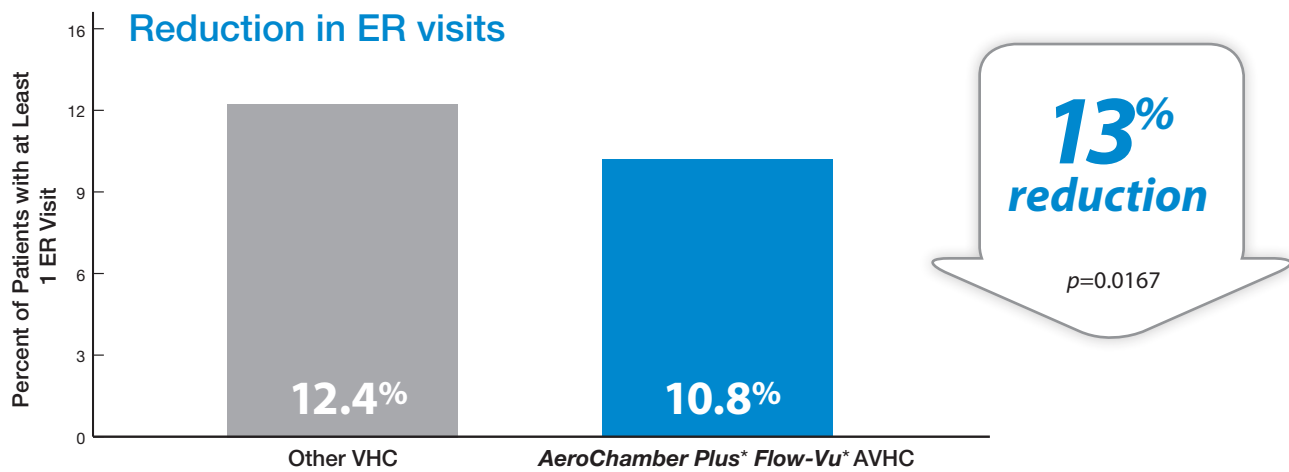
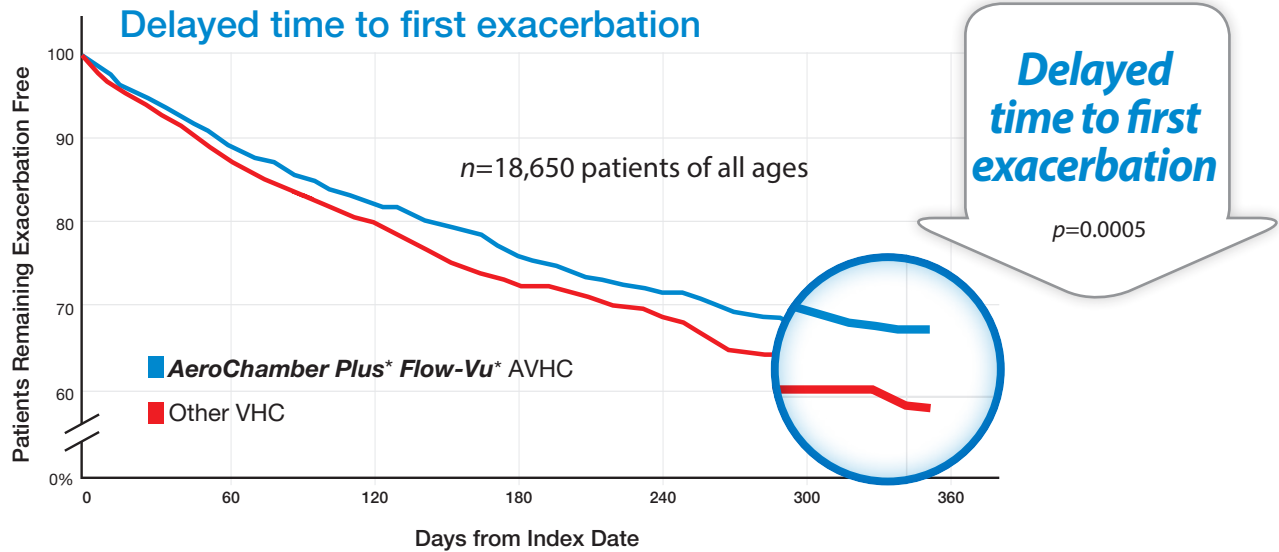
‡ **AeroChamber Plus*** VHC. Chambers prepared as per IFU.

⁸ Harkness H *et al.* Valved Holding Chambers are non-interchangeable: Development of a Universal VHC that provides assurance of drug delivery to patients and health care providers. Presented at Canadian Respiratory Conference, 2012. ⁹ Plaza V *et al.* Medical personnel and patient skill in the use of metered dose inhalers: a multicentric study. *Respiration* 1998;65:195-8. ¹⁰ Study Summary: AeroChamber* Brand of VHC, May 2016. ¹¹ Nagel *et al.* Equivalency evaluation of valved holding chambers with albuterol pressurized metered dose inhaler. *Respiratory Drug Delivery Europe* 2017. ¹² Medicines and Healthcare Products Regulatory Agency (MHRA). Drug safety update – inhaled products that contain corticosteroids, July 2008. ¹³ Global initiative for asthma (GINA) guidelines, 2017; Global strategy for asthma management and prevention.

Delivers the Intended Dose

IMPROVED CLINICAL OUTCOMES

Real world evidence shows improved clinical outcomes with **AeroChamber Plus* Flow-Vu* AVHC¹⁴**



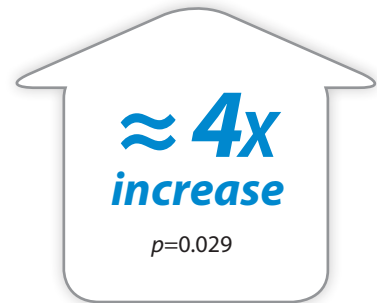
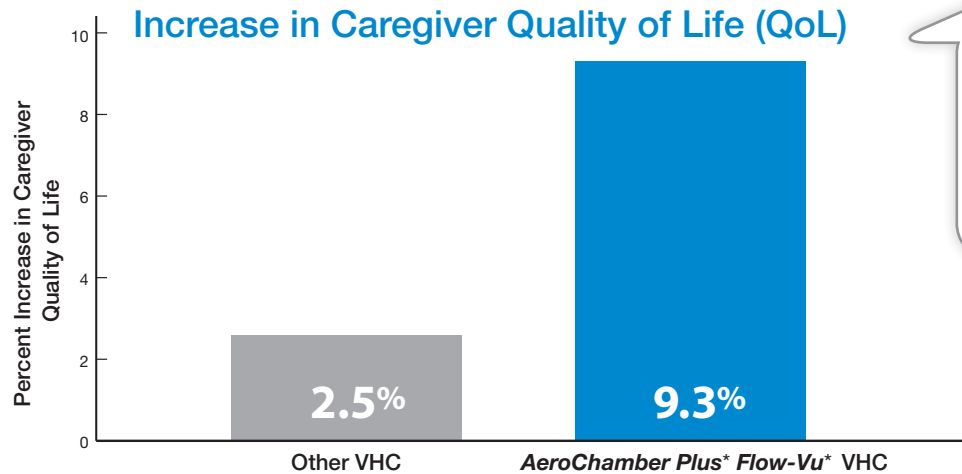
AVHC = Anti-static valved holding chambers

¹⁴ Burudpakdee, et al. A retrospective study of the Effectiveness of AeroChamber Plus* Flow-Vu* Antistatic Valved Holding Chamber for Asthma Control. Pulmonary Therapy, 2017.

Improved Asthma Control

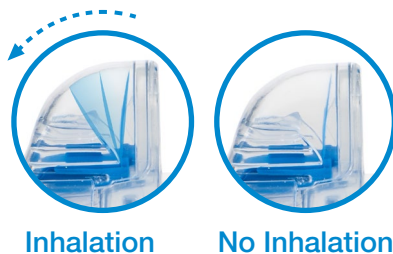
VISUAL ASSURANCE

In Vivo studies show use of a chamber with the **Flow-Vu*** Inhalation Indicator was associated with quality of life improvements and strong device preference^{15,16}



- QoL scores were greater in the **AeroChamber Plus*** **Flow-Vu*** VHC group

The **only** chamber with a dedicated inhalation indicator



The **Flow-Vu*** Inhalation Indicator is a valuable feedback tool that allows caregivers to:

- Ensure a proper facemask seal
- Coordinate actuation of MDI with inhalation
- Count breaths

Flow-Vu*

Moves with inhalation to provide **visual assurance** of correct use and medication delivery.



¹⁵ Ammari W et al. Evaluation of asthma control, parent's quality of life and preference between **AeroChamber Plus*** and **AeroChamber Plus* Flow-Vu*** spacers in young children with asthma. *Journal of Asthma*, Vol 52;3;2015.
¹⁶ Baig M et al. **Flow-Vu*** Indicator in valved holding chamber for pediatric asthma. American Academy of Pediatrics National Conference 2013.

Improved Quality of Life

Prescribe *AeroChamber Plus* Flow-Vu** AVHC — Specify No Substitutions —

9  **out of 10**
MDI Patients don't use their inhalers correctly.

Guidelines recommend



 Delivers the intended dose

 Safety and efficacy validated

 =  QoL

 Visual assurance

 Improves clinical outcomes

 Other chambers are not equivalent



Trudell Medical International*

Manufactured by: Trudell Medical International
725 Third Street, London, Ontario, Canada, N5V 5G4
+1-866-510-0004 info@trudellmed.com



 Designed and Developed in Canada

AeroChamber
Plus **Flow-Vu**

Anti-Static Valved Holding Chamber